



**AGRICULTURE AND FOOD DEVELOPMENT AUTHORITY**

The Irish Agriculture and Food Development Authority



# Monitor farm benchmarking for integrating an AMS and grazing in a spring calving herd in Ireland

**Dr. Cathriona Foley**

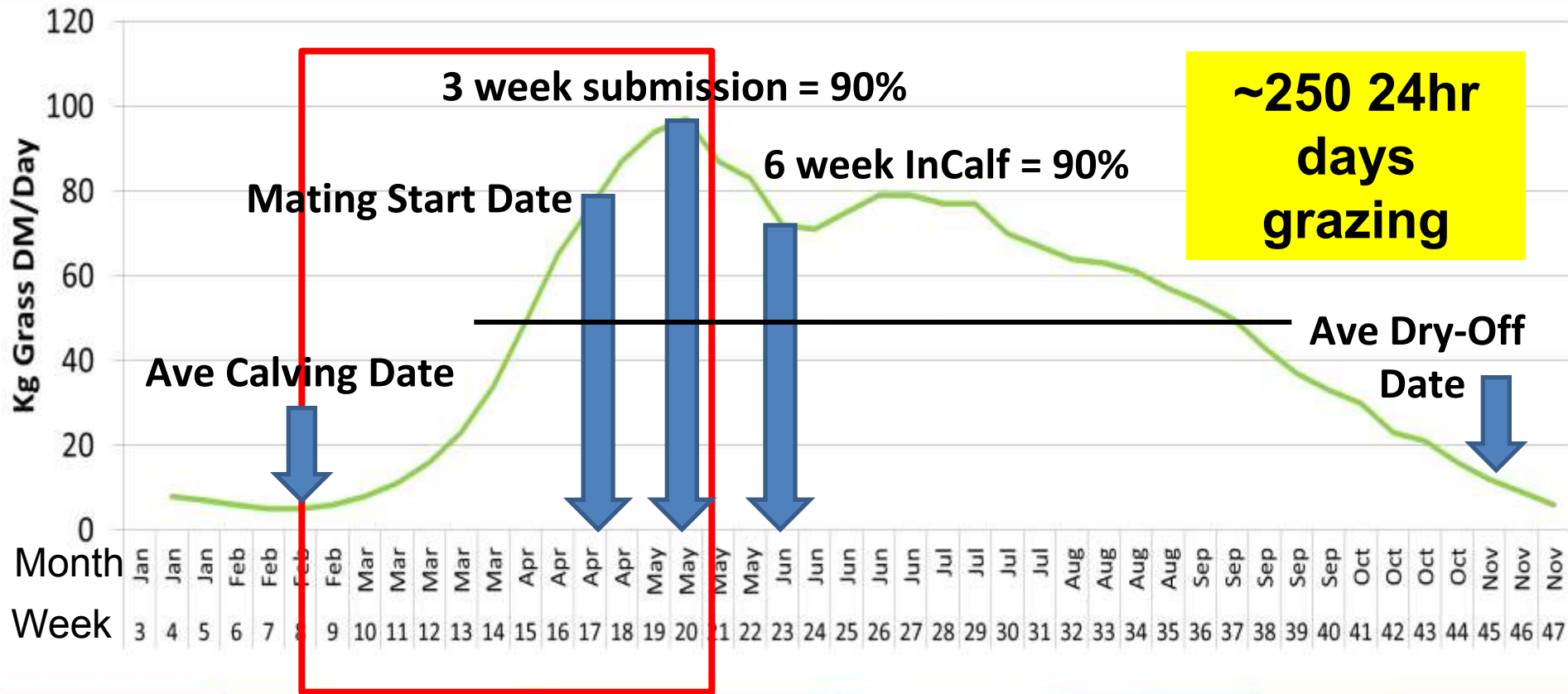
Animal and Grassland Research and  
Innovation Centre,  
Teagasc Moorepark, Ireland



# AUTOGRASSMILK

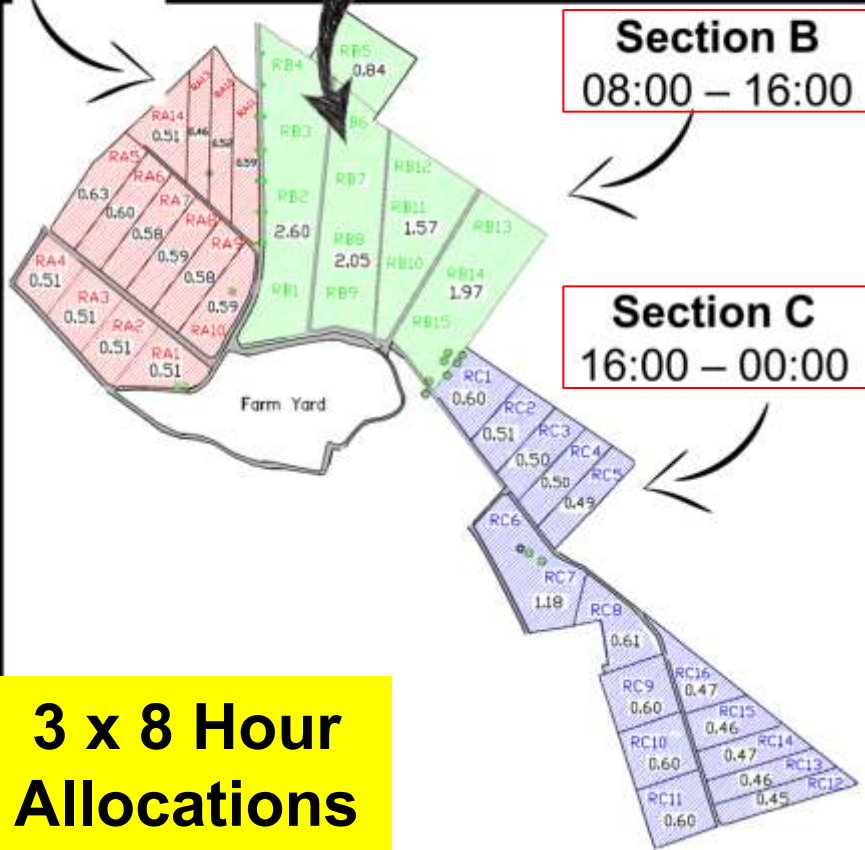
# Spring Calving & Grazing System

## Grass Growth Curve in Ireland 2004 to 2014

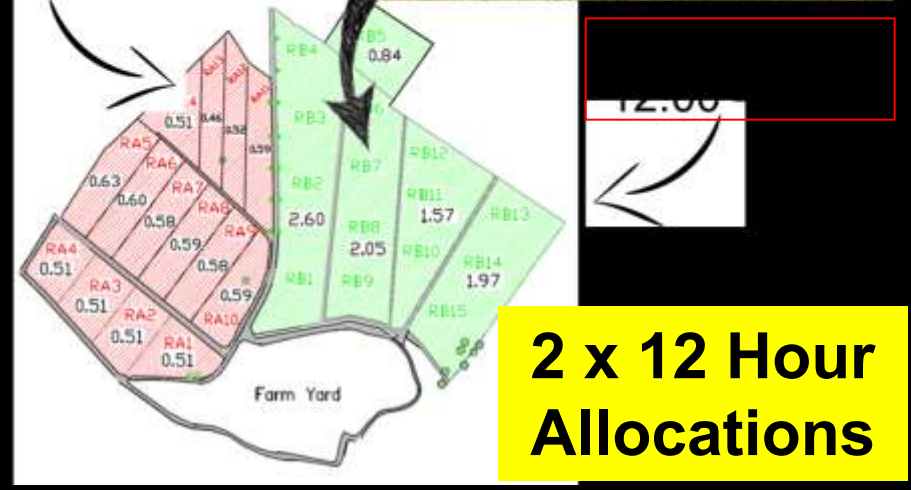


# AMS & Grazing System

## 3-Way Strip Grazing



## 2-Way Strip Grazing



## 3WG

31% reduced milking interval,  
 40% greater milking frequency  
 20% greater daily milk production.  
 Greater utilization levels of the AMS  
 milking units throughout the day.





J. Dairy Sci. 96:4494–4504

<http://dx.doi.org/10.3168/jds.2013-6716>

© American Dairy Science Association<sup>®</sup>, 2013.

## Comparison of 2 systems of pasture allocation on milking intervals and total daily milk yield of dairy cows in a pasture-based automatic milking system

N. A. Lyons,<sup>1</sup> K. L. Kerrisk, and S. C. Garcia

Dairy Science Group, Faculty of Veterinary Science, The University of Sydney, Camden (2570), NSW, Australia

### 3-Way Grazing

- 31% reduced milking interval
- 40% greater milking frequency
- 20% greater daily milk production
- Greater utilization levels of the AMS milking units throughout the day.

# AMS Monitor Farm Benchmarking



Farm ID	AMS Brand	Number of Units	Grazing System
1	Lely A4	2	2-way
2	Lely A4	2	2-way
3	Lely A4	2	3-way
4	Lely A4	1	2-way
5	Fullwood Merlin	1	3-way
6	Lely A4	4	2-way
7	Lely A4	1	2-way

# AMS Monitor Farm Benchmarking



Farm ID	Farm Area (ha)	Grazing Area (ha)	Number of cows
1	43	39	86
2	52	47	86
3	56	48	113
4	43	33	75
5	36	31	73
6	136	65	182
7	111	40	50

# AMS Monitor Farm Benchmarking



Farm ID	Total Milk (Kg) Purchaser	Total Concentrate (kg) AMS	Total Milk (kg) AMS
1	582,791	80,708	607,133
2	536,073	87,126	597,362
3	536,073	94,173	659,123
4	334,745	83,732	372,344
5	447,602	122,440	440,905
6	902,075	94,099	969,417
7	230,075	27,784	234,411



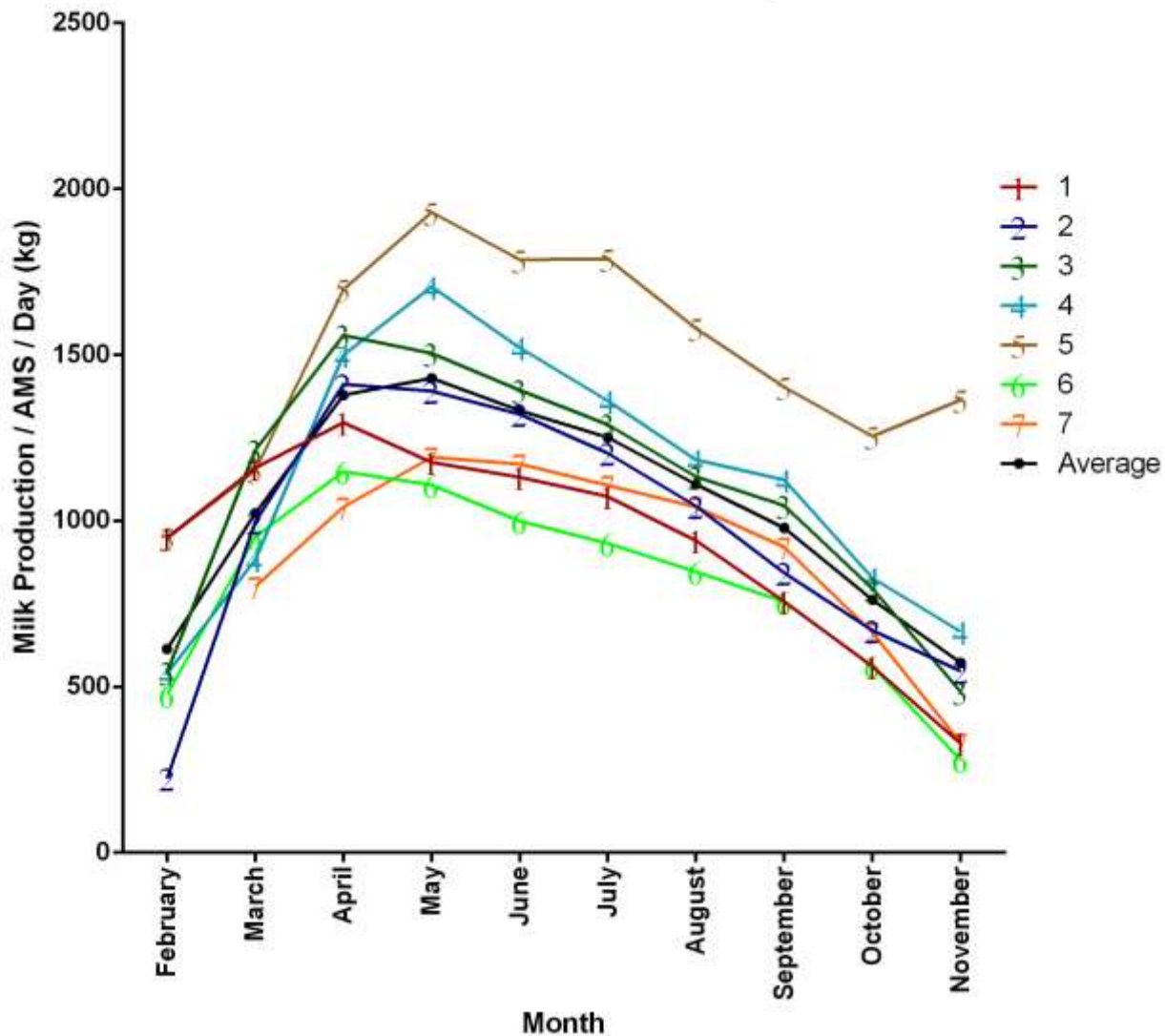
# AMS Monitor Farm Benchmarking



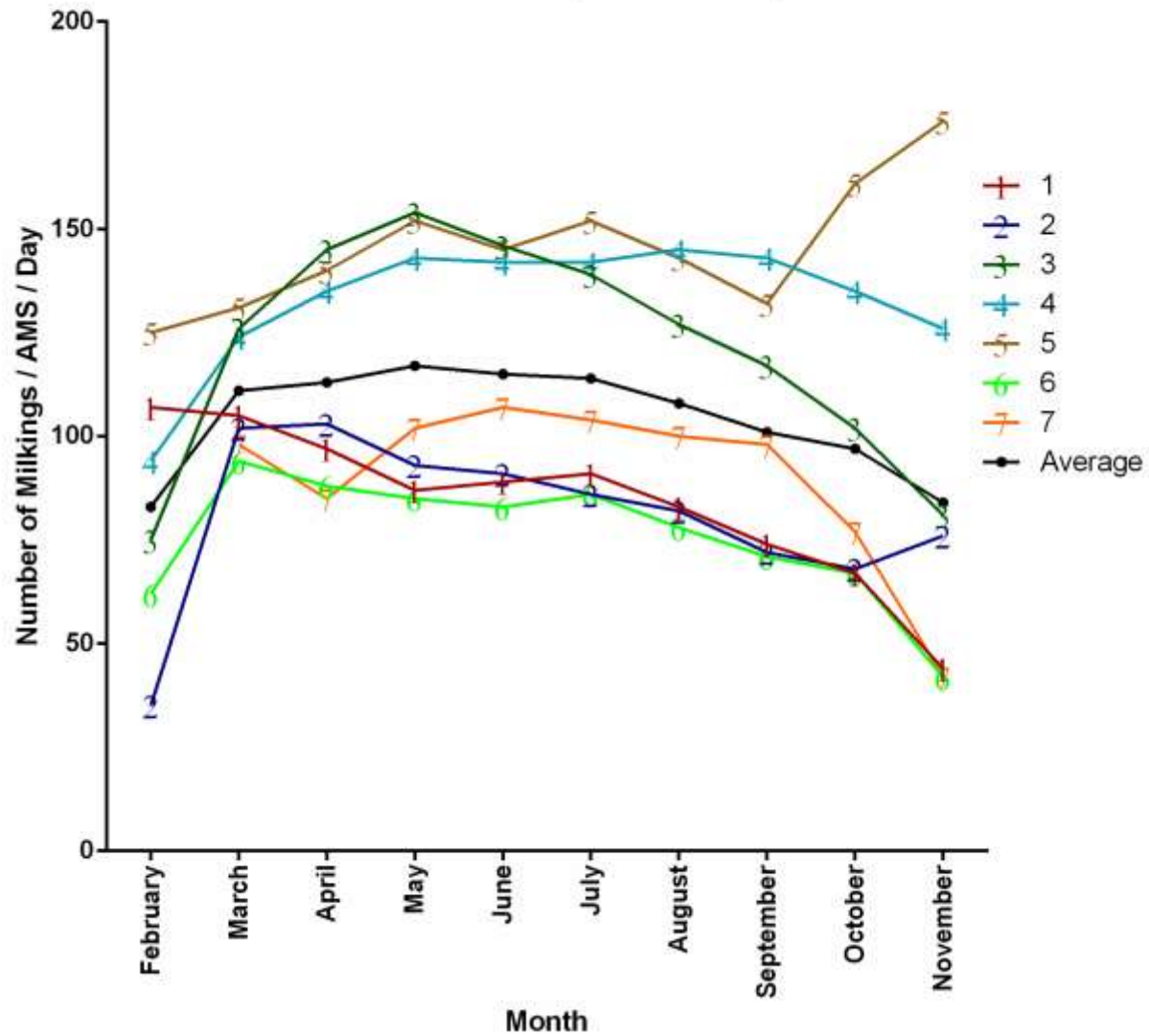
Farm ID	Milk Fat (%)	Milk Pro (%)	MS/ Cow/ Year (kg)	SCC
1	4.24	3.54	527	128
2	4.07	3.32	461	201
3	4.5	3.65	470	295
4	3.94	3.19	318	275
5	3.74	3.37	436	195
6	4.69	3.84	326	165
7	4.06	3.43	345	147



### Milk Production / AMS / Day

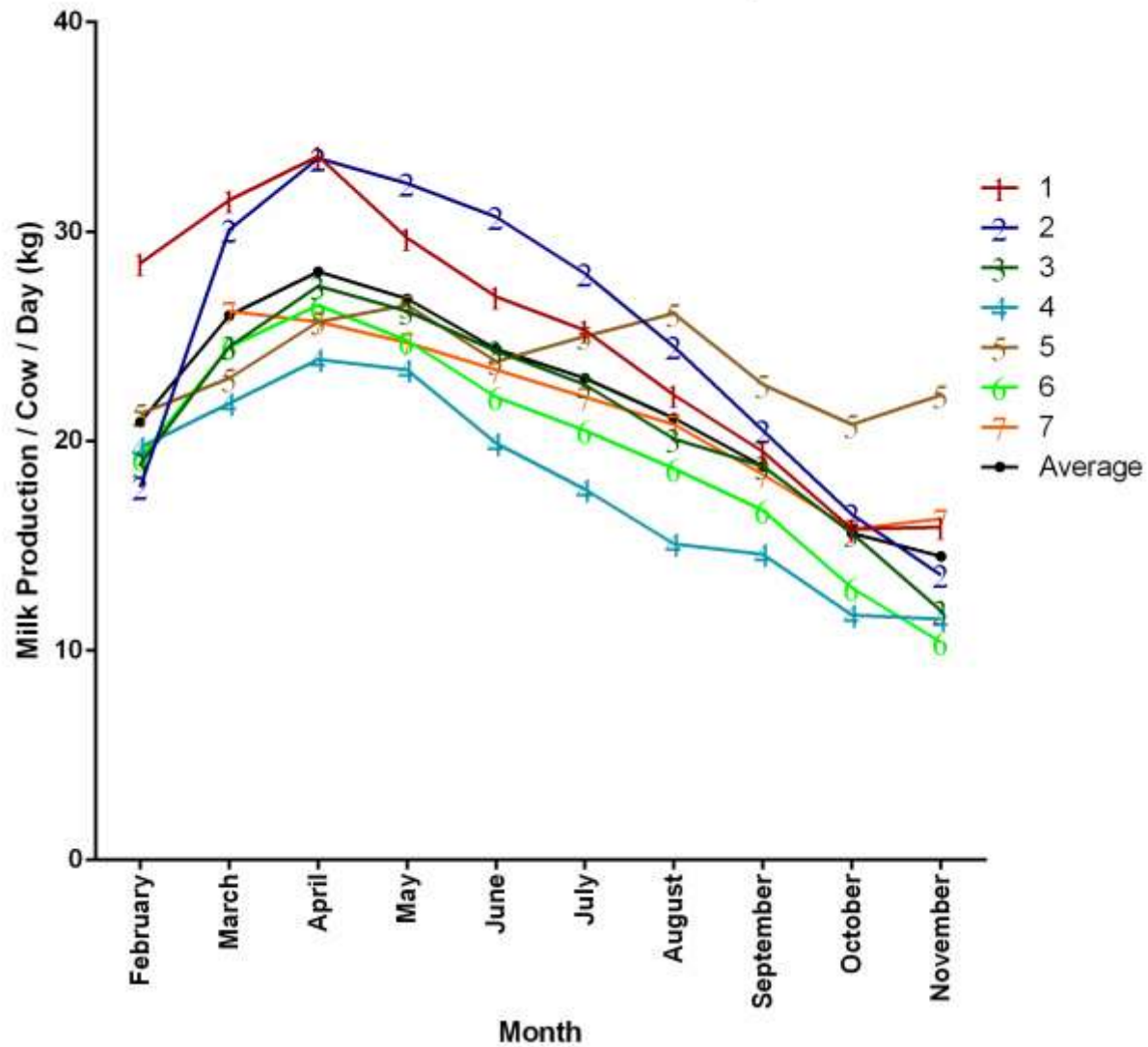


# Number of Milkings / AMS / Day

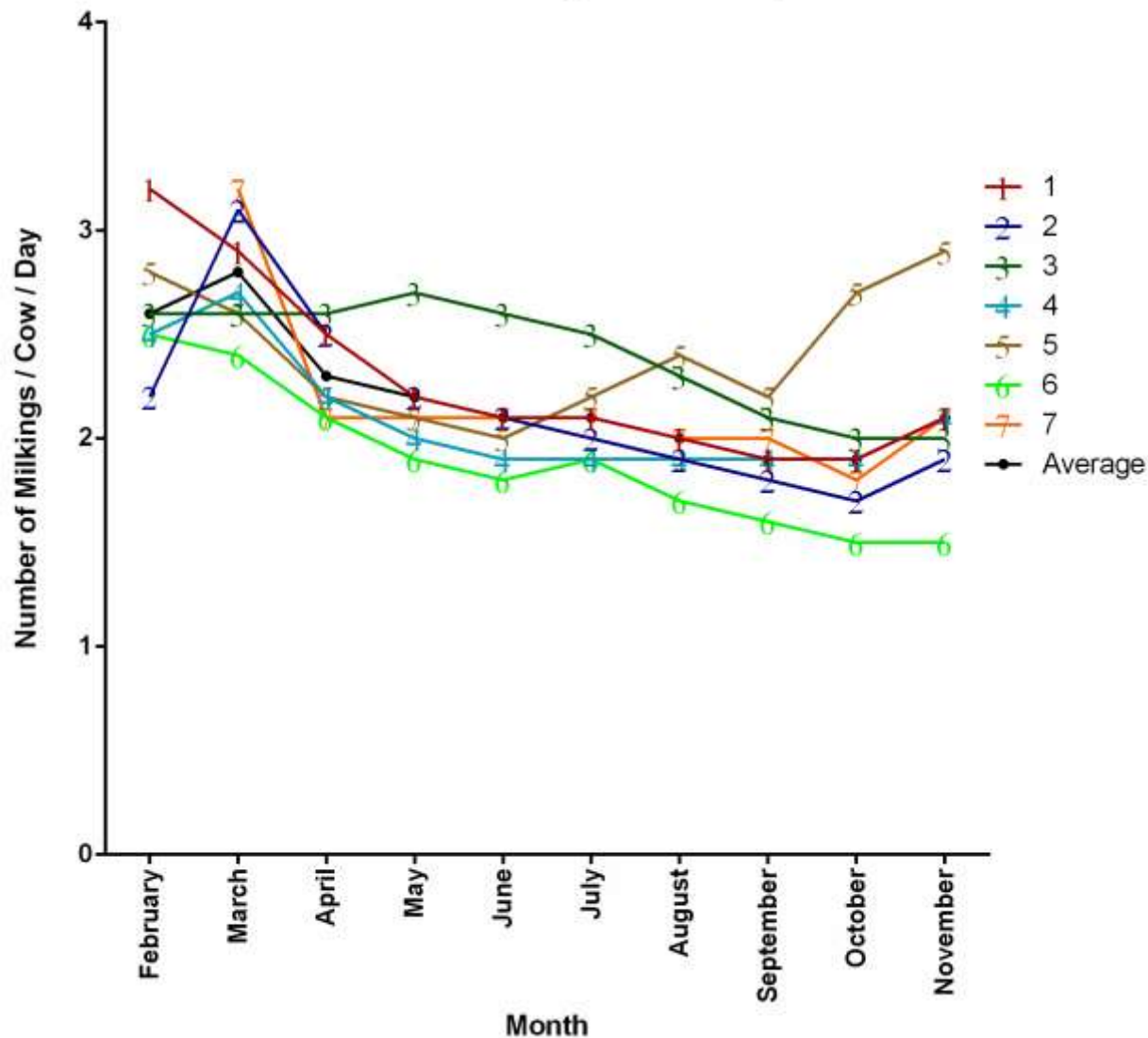




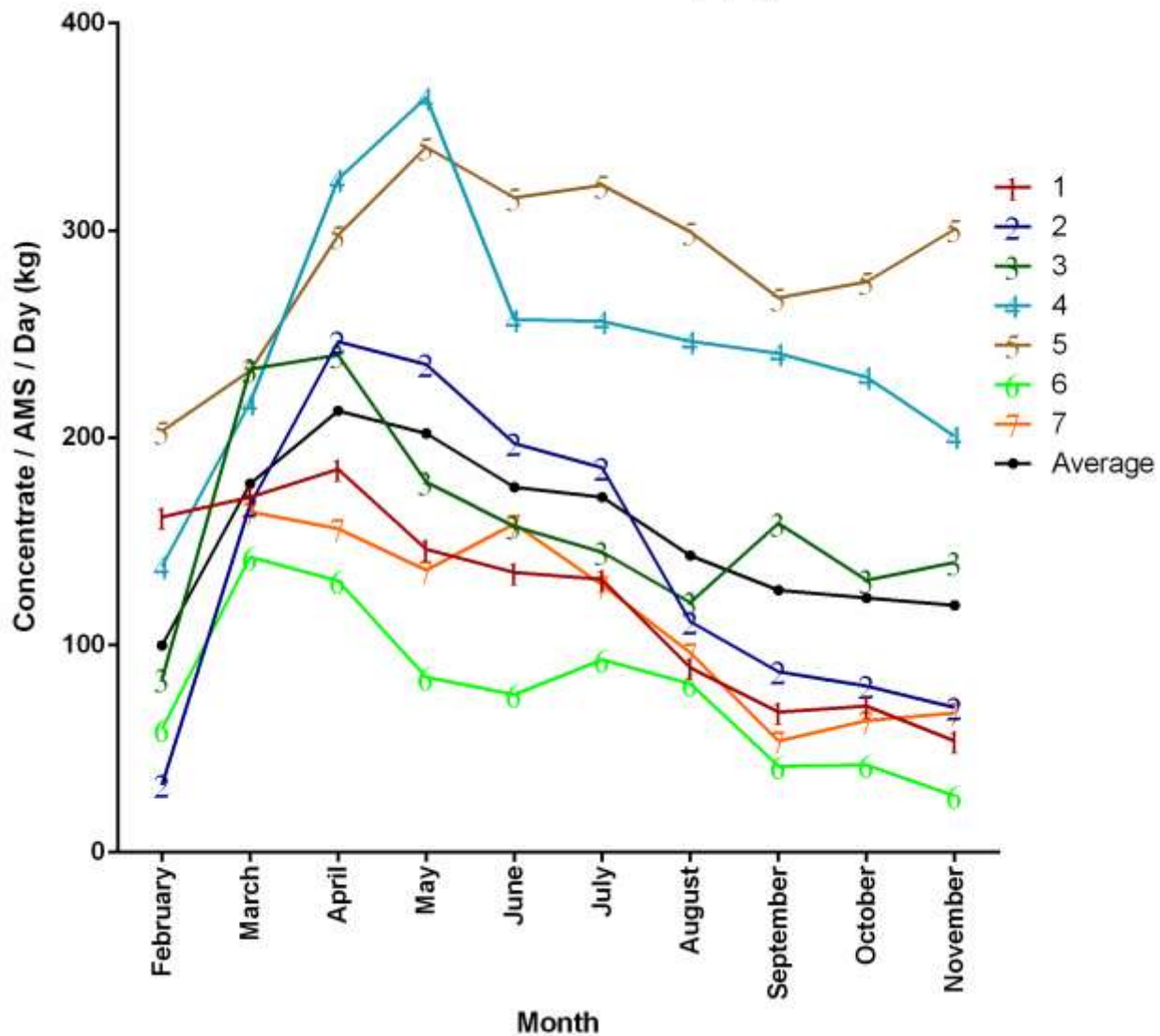
# Milk Production / Cow / Day



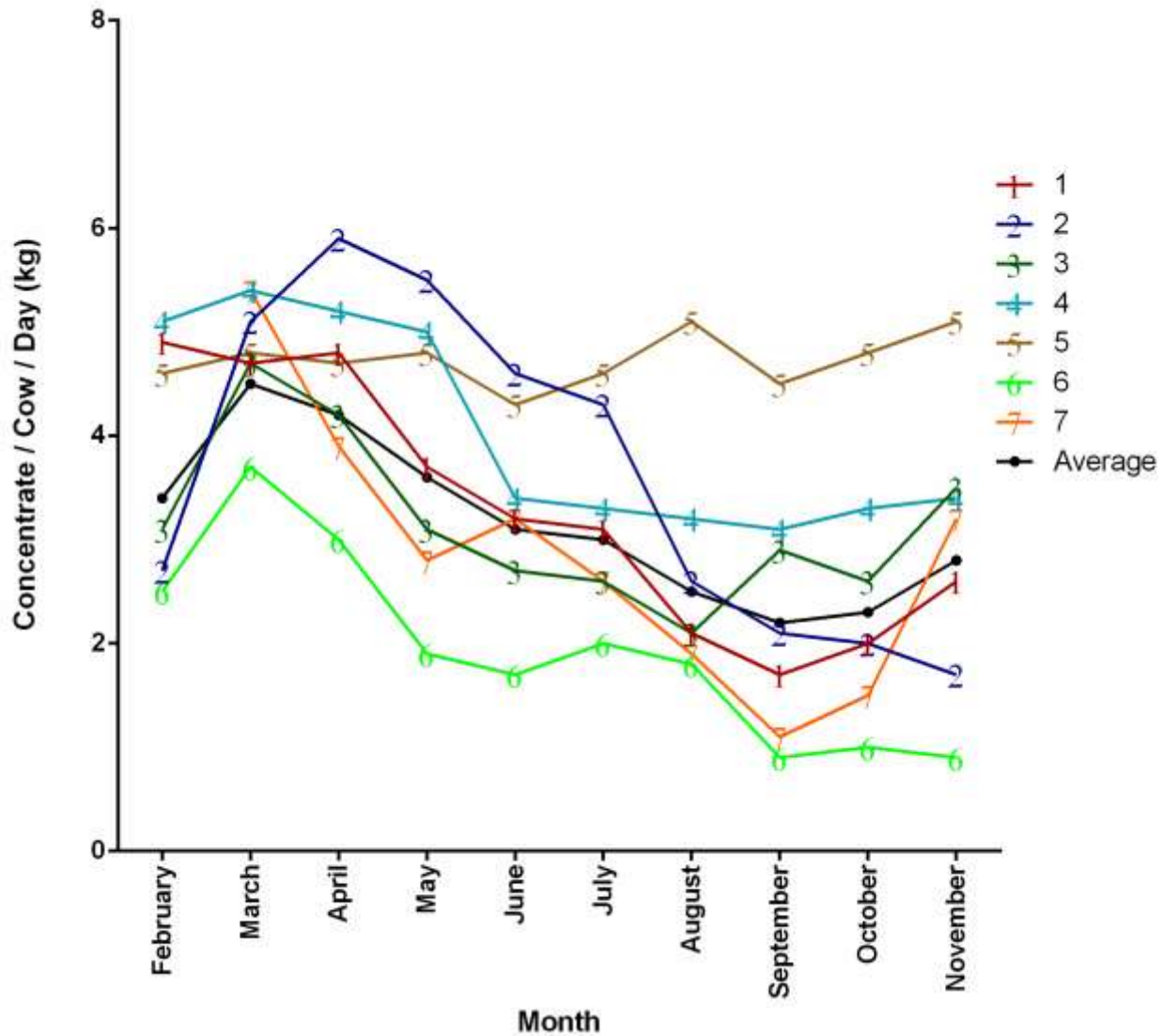
# Number of Milkings / Cow / Day



# Concentrate / AMS / Day (kg)



### Concentrate / Cow / Day (kg)





# Acknowledgements

Dr. Bernadette O'Brien (co-coordinator of Autograssmilk)

John Shortall (PhD student)

James Daunt (Technician)

Numerous work experience students

Farm staff at the Teagasc Dairygold Research Farm

Fullwood



The Irish Agriculture and Food Development Authority

# Thank you for your attention – Questions?

